

# FLAGLER STATION

11801 NW 100 Road, Miami  
**SUITE 11 - OW4**



**FOR LEASE**  
**4,800 SF AVAILABLE**



## ONE BUSINESS PARK - ONE CONTACT ENDLESS POSSIBILITIES

Flagler Station is a strategically located, 9 million square foot campus style office, retail and industrial development, featuring beautiful lakefront views in a suburban atmosphere. Phase 1 consists of 2.5 million square feet of existing office and industrial space. Phase 2 totals 6.5 million square feet of new development consisting of 1.5 million square feet of office and 5 million square feet of retail and distribution space.

## PROPERTY HIGHLIGHTS

- ±4,800 SF Available
- ±3,158 SF Warehouse
- ±1,642 SF Office
- 20' Clear Height
- Fully Sprinklered
- 1 Dock Door & 1 Ramp
- On-site Property management
- On-site Property security
- Available January 1, 2024

For more information, please contact:

**STUART T. GORDON, SIOR**  
Executive Director  
+1 305 805 5427  
[stuart.gordon@cushwake.com](mailto:stuart.gordon@cushwake.com)

**MATTHEW A. BITTEL, SIOR**  
Senior Director  
+1 305 805 3032  
[matthew.bittel@cushwake.com](mailto:matthew.bittel@cushwake.com)

**CUSHMAN & WAKEFIELD US, INC.**

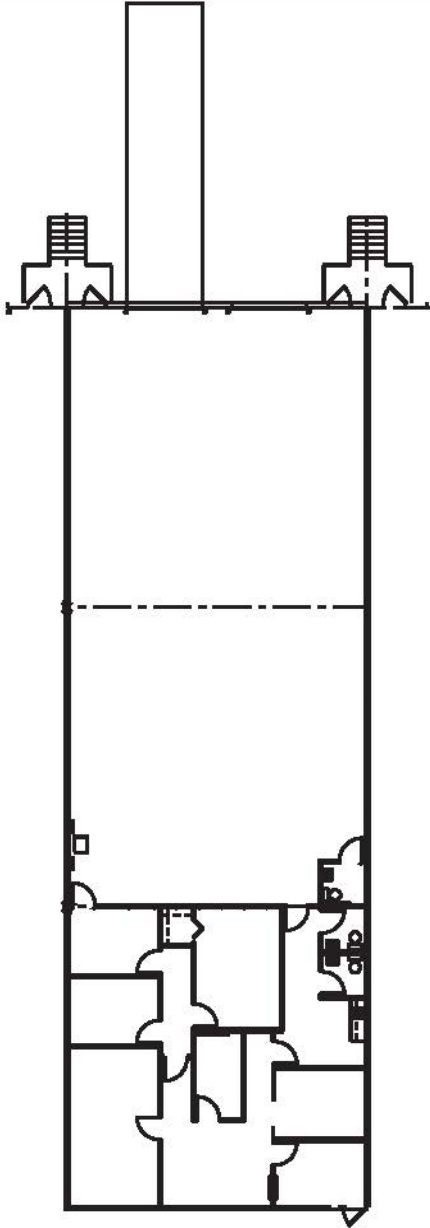
9960 NW 116 Way, Suite 2  
Medley, FL 33178

[cushwakesouthfl.com](http://cushwakesouthfl.com) | [@CushWakeSouthFL](https://twitter.com/CushWakeSouthFL)

# FLAGLER STATION

11801 NW 100 Road, Miami  
**SUITE 11 - OW4**

**FOR LEASE**  
**4,800 SF AVAILABLE**



PROPERTY HIGHLIGHTS	
TOTAL AVAILABLE	±4,800 SF
WAREHOUSE SIZE	±3,158 SF
OFFICE SIZE	±1,642 SF
DOCK DOOR / RAMP	1 / 1
CLEAR HEIGHT	20'

## Phase I



For more information, please contact:

**STUART T. GORDON, SIOR**  
 Executive Director  
 +1 305 805 5427  
[stuart.gordon@cushwake.com](mailto:stuart.gordon@cushwake.com)

**MATTHEW A. BITTEL, SIOR**  
 Senior Director  
 +1 305 805 3032  
[matthew.bittel@cushwake.com](mailto:matthew.bittel@cushwake.com)



**CUSHMAN & WAKEFIELD US, INC.**  
 9960 NW 116 Way, Suite 2  
 Medley, FL 33178

[cushwakesouthfl.com](http://cushwakesouthfl.com) | [@CushWakeSouthFL](https://twitter.com/CushWakeSouthFL)

©2023 Cushman & Wakefield. All rights reserved. The information contained in this communication is strictly confidential. This information has been obtained from sources believed to be reliable but has not been verified. NO WARRANTY OR REPRESENTATION, EXPRESS OR IMPLIED, IS MADE AS TO THE CONDITION OF THE PROPERTY (OR PROPERTIES) REFERENCED HEREIN OR AS TO THE ACCURACY OR COMPLETENESS OF THE INFORMATION CONTAINED HEREIN, AND SAME IS SUBMITTED SUBJECT TO ERRORS, OMISSIONS, CHANGE OF PRICE, RENTAL OR OTHER CONDITIONS, WITHDRAWAL WITHOUT NOTICE, AND TO ANY SPECIAL LISTING CONDITIONS IMPOSED BY THE PROPERTY OWNER(S). ANY PROJECTIONS, OPINIONS OR ESTIMATES ARE SUBJECT TO UNCERTAINTY AND DO NOT SIGNIFY CURRENT OR FUTURE PROPERTY PERFORMANCE.